

NEW PRODUCT



4-PADEL



SOGO
RUBBER TECHNICAL PRODUCTS



SOGOLAB
FREE TO SHAPE

— SINCE 1967 —



SOGO 4-PADEL

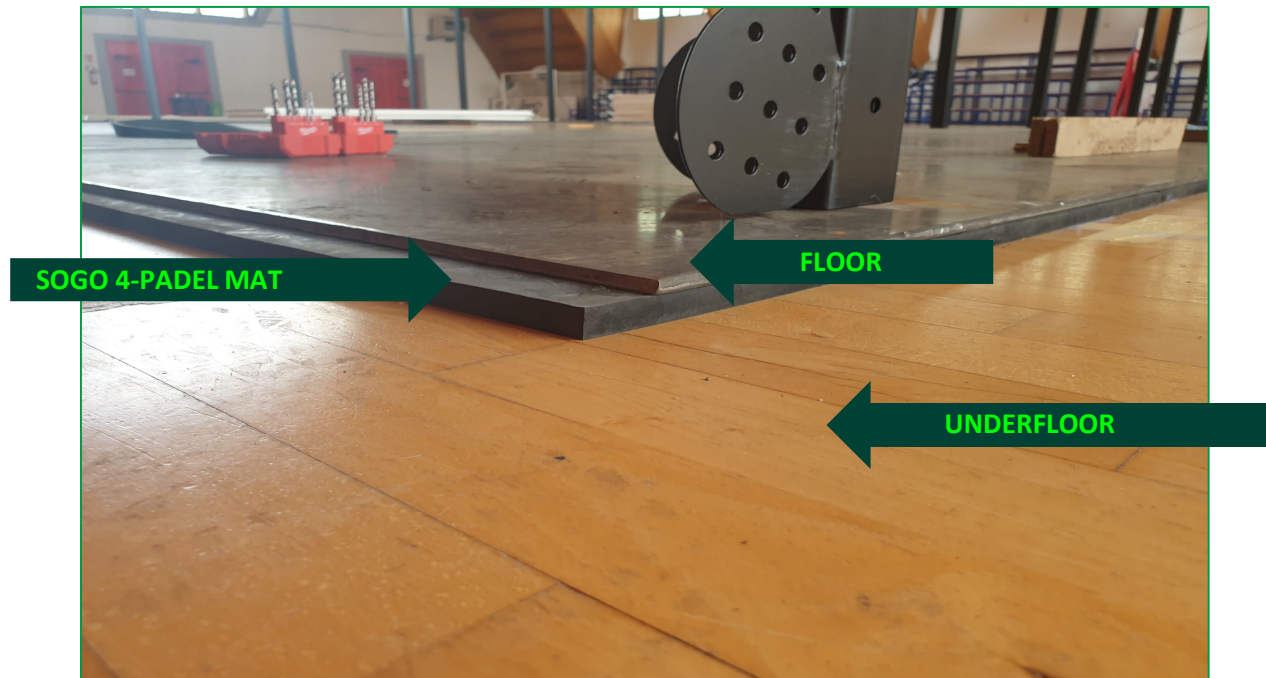
Over 50 years of experience of **SOGO** in the design of compounds and in the production of technical rubber items are at the service of the most popular sport of the moment: **PADEL**



SOGO 4-PADEL

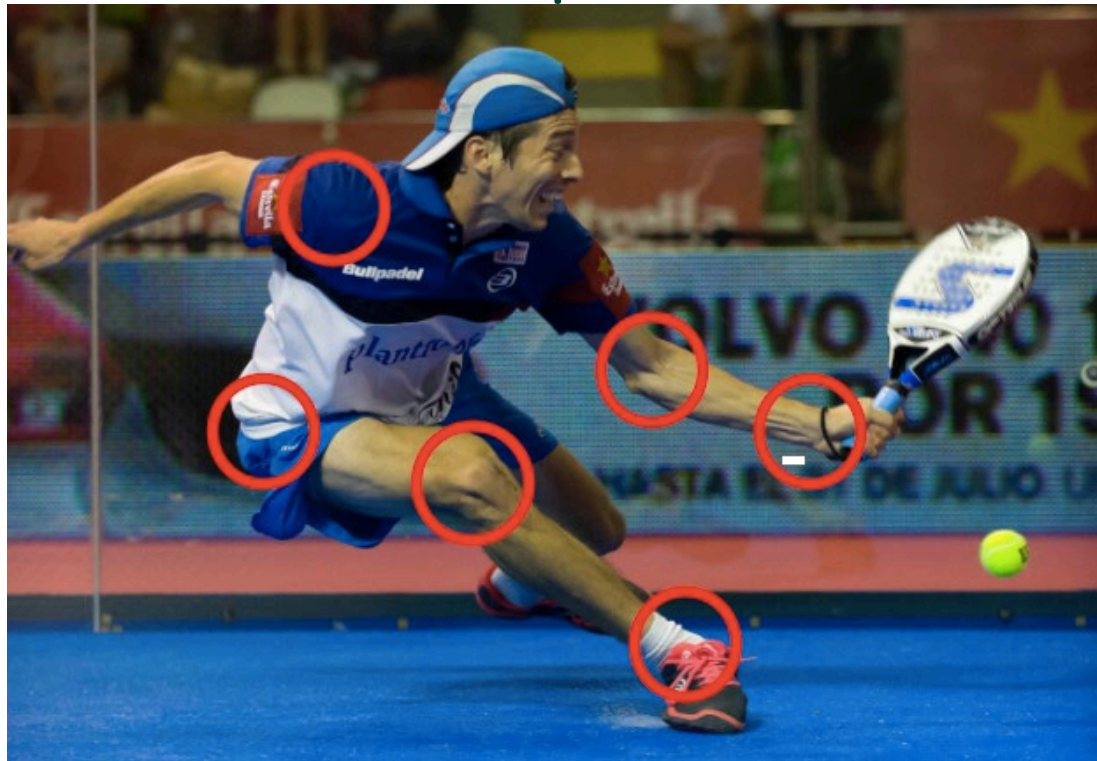
SOGO SpA launches an innovative product **"SOGO 4-PADEL"** for PADEL courts:
an anti-vibration mat for PADEL courts; **both indoor and outdoor.**

The mat "SOGO 4-Padel" can be used as protection and placed between the ground and the pavement of the court.



SOGO 4-PADEL

A thin shock-absorbing mat, which allows a perfect playing experience from a technical point of view and with **less stress and risk of joint injuries** for the athletes.



SOGO 4-PADEL

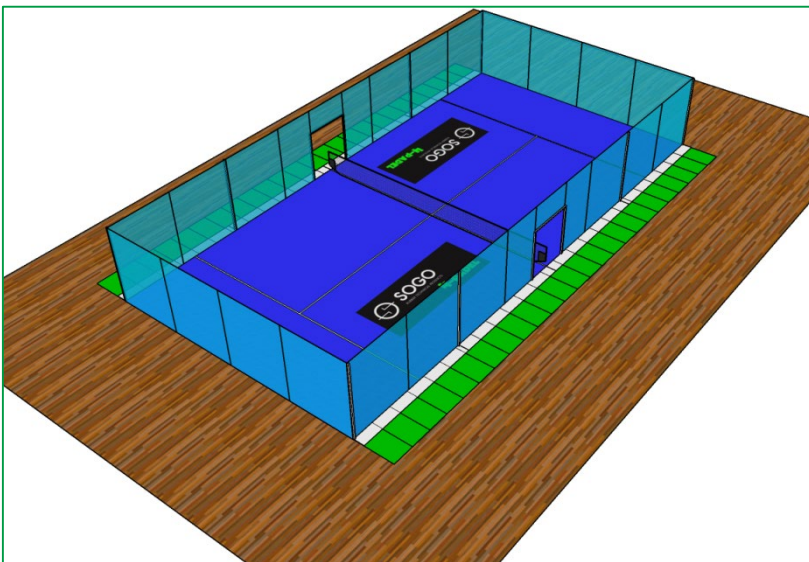
The mat "**SOGO 4-PADEL**" has a **life cycle of over 20 years** and very high performance as an insulator and protective element of the playing surface, making it possible to remove, if needed, the Padel court without altering the existing flooring in any way.



The picture shows the application of "SOGO 4-Padel" products for indoor use, inside the "COLLEFERRO PADEL ASD" Sports Center in Colleferro (RM) for the protection of the existing parquet.

Vibora-LAT

SOGO 4-PADEL: vibora-lat



DESCRIPTION:

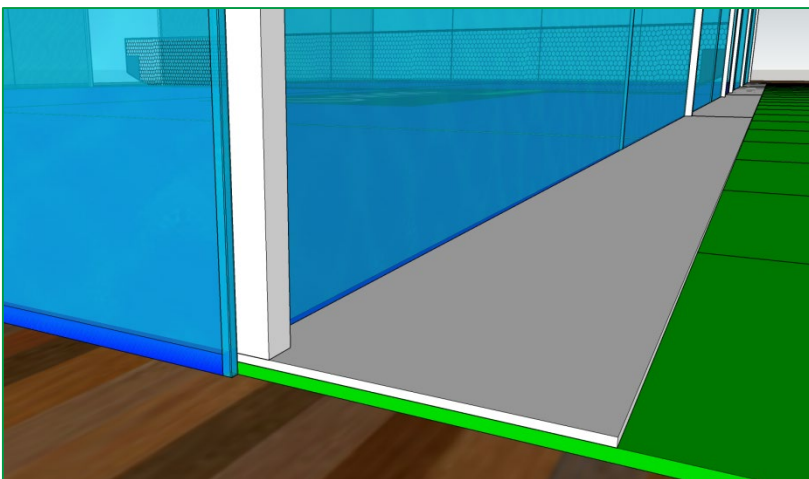
The mat «**VIBORA-LAT**» is placed in indoor fields along the perimeter on the long side of the field in correspondence with the bases of the perimeter glass supports of the field, to protect the existing flooring

DIMENSIONS:

- 1500x1150x15 mm.
- 1500x1150x7 mm.

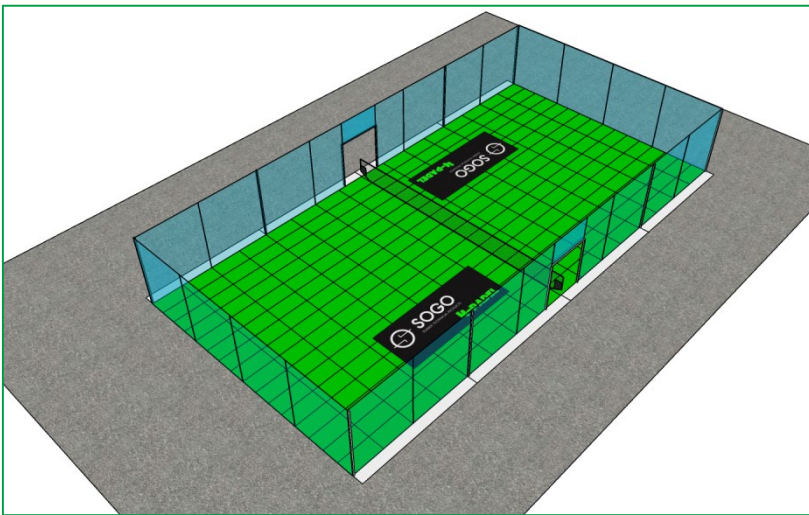
BENEFITS:

- Easiness of application and of eventual removal
- A product life cycle of twenty years
- Product that can be requested in different heights



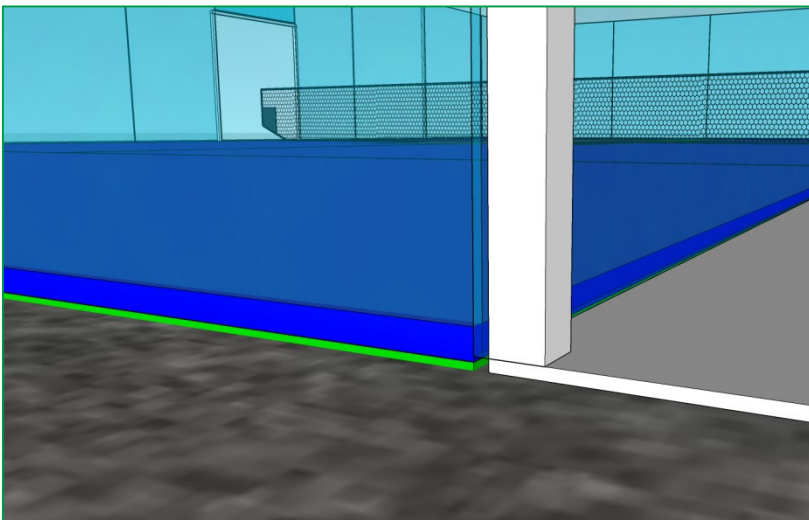
Chiquita-UNDER

SOGO 4-PADEL: Chiquita under



DESCRIPTION:

With «**Chiquita-UNDER**» the surface of the playing field is not placed directly on the bottom, but on this thin shock-absorbing mat, which allows for a perfect playing experience from a technical point of view and with less stress on the joints of athletes.



DIMENSIONS:

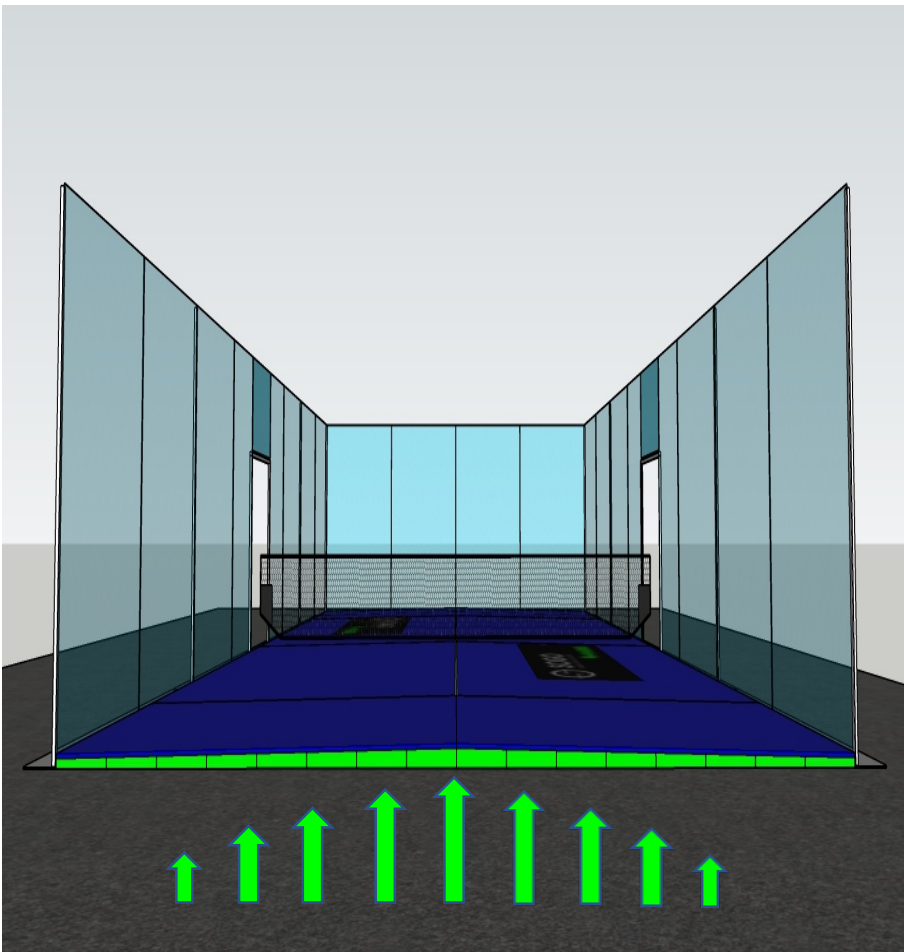
- 1430x770x5 mm

BENEFITS:

- Easiness of application and of eventual removal
- A product life cycle of twenty years
- Product that can be requested in different heights

Smash-CURVE

SOGO 4-PADEL: smash-curve



DESCRIPTION:

The mat **«Smash-CURVE»**, thanks to its thickness that decreases gradually from the center of the field to the sides, allows water to drain so that in case of precipitation the playing field dries more quickly, with the benefit of not having long periods of inactivity.

DIMENSIONS:

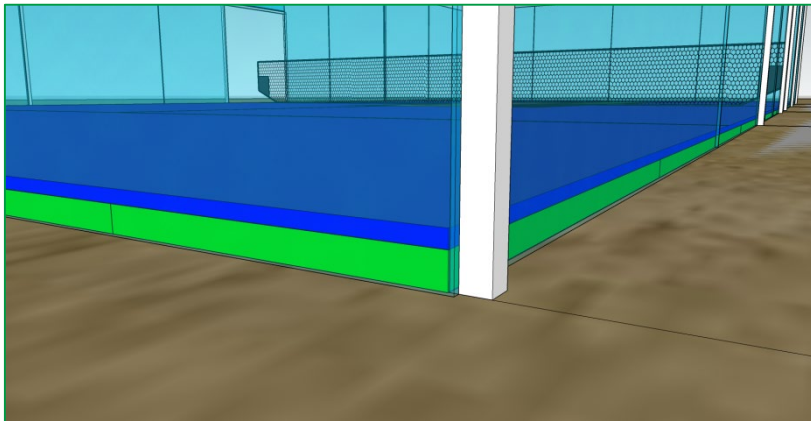
- 1250x625 mm

BENEFITS:

- Easiness of application and of eventual removal
- A product life cycle of twenty years
- Product that can be requested in different heights

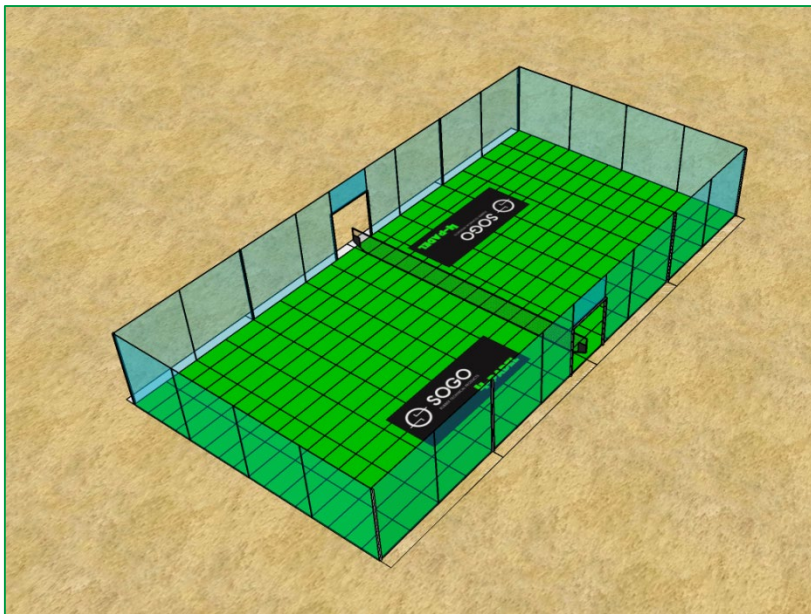
Volée-MAT

SOGO 4-PADEL: volée mat



DESCRIPTION:

The «**Volée-MAT**» is positioned under the whole area of the playing field and can be used to create removable structures, for example on state-owned land such as beaches.



DIMENSIONS:

- 1400x600x40 mm

BENEFITS:

- Easiness of application and of eventual removal
- A product life cycle of twenty years
- Product that can be requested in different heights



For further information:

SOGO SpA

Tel. +39.0775.88.88.100

e-mail: sales@sogo.it

www.sogo.it

